



DIRECT PTZ APPLICATION USER MANUAL

DIRECT PTZ APPLICATION SOFTWARE

The Direct PTZ Application allows the CA-501J Keyboard Joystick Controller to communicate directly with OpenEye IP PTZ cameras. This improves camera response time.

Clear Keyboard Control

Direct PTZ application works using Windows rather than the server software of your recorder. In order to operate properly, the keyboard control functions of your server software must be disabled.

1. On the Display screen, click **Menu**.
2. Click **Network**.
3. Clear the **Use Keyboard Control** checkbox.

Installation

You can install the Direct PTZ application on any personal computer (PC), laptop, or Windows-based recorder by downloading the program from openeye.net.

Note The Direct PTZ application can be installed on any Windows- based PC. If you are using RADIUS software in conjunction with Direct PTZ, you must use RADIUS version 4.0 or above. RADIUS is not required to use the Direct PTZ application.

Note The Direct PTZ application will only work with an OpenEye PTZ Keyboard Joystick Controller, (CA-501J).

Starting the Direct PTZ Application

After installing the program on your recorder or PC, open the program to begin configuring your cameras.

When using a PC:

1. If you are using RADIUS, exit RADIUS.

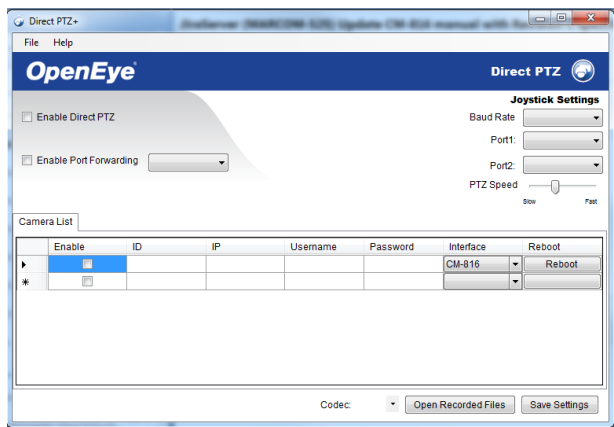
Note RADIUS is not required to use the Direct PTZ application.

2. Double-click **Direct PTZ**.

When using an OpenEye recorder:

1. In the Live Screen, click **Exit**.
2. Click **Restart in Windows Mode**.
3. Click **OK**.
4. Double-click **Direct PTZ**.

SETUP



Basic Configuration

1. Click **Baud Rate**, and then select the Baud Rate that corresponds with the Baud Rate output on your Keyboard Joystick Controller. The default rate is **9600**.
2. Click **Port**, and then select the COM port associated with the Keyboard Joystick Controller on your recorder or PC. If you are using an OpenEye recorder, the default is **COM 19**.

Note If attaching a second Keyboard Joystick Controller to the PC, select the COM port for the second controller in the Port 2 box.

3. Adjust the **PTZ Speed** slider bar to your desired speed.

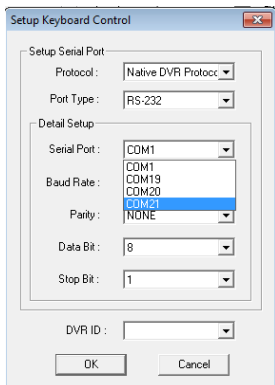
Note The Keyboard Joystick Controller will continue to have variable speed control based on the position of the control stick. This configuration limits the maximum speed of the camera.

4. Enter the information for each camera on your system in **Camera List**.
 - **ID** – Type the ID number for the camera. When controlling cameras using the keyboard joystick controller, use this number to determine which camera you are controlling.
 - **IP** – Type the IP address of the camera.
 - **Username** – Type the same username that is used to log in to the camera.
 - **Password** – Type the password associated with the username of the camera.
 - **Interface** – Choose the camera connection type from the interface list.
 - **Reboot** – If required, use the **Reboot** button to restart the camera.
5. Select **Enable**.
6. Click **Save Settings**.

Direct PTZ Port Forwarding

Port forwarding allows the Direct PTZ application to forward the user interface controls to the recorder via Virtual COM Ports. This makes it possible for you to control your recorder in addition to your PTZ cameras.

You will need to set up port forwarding on the Direct PTZ Application and the Server Software on your recorder.



Setting Port Forwarding in the Direct PTZ Application

1. Start the **Direct PTZ Application**.
2. Check **Enable Port Forwarding**, and then select your desired COM port. The default port is COM31.
3. Select **Enable**.

Setting Port Forwarding on Your Recorder

1. In the Display screen, click **Menu**.
2. Click **Network**.
3. Select **Use Keyboard Control**, and then click **Setup Keyboard Control**.
4. Select the **Serial Port** that matches the COM port you set earlier on the Direct PTZ Application.
5. Select a **DVR ID**. The default DVR ID is **001**.
6. Click **OK**.

Note Direct PTZ can support an unlimited number of cameras. However, the Keyboard Joystick Controller is limited to 255 cameras.

www.openeye.net

1-888-542-1103

© 2014 OpenEye

All other rights are reserved to OPENEYE. OPENEYE, and OpenEye, are registered trademarks of OPENEYE in the United States and elsewhere. All other brand and product names are trademarks or registered trademarks of the respective owners.