

OpenEye[®]

MDVR for the iPhone

Instructions



www.openeye.net

OpenEye® iPhone MDVR
Software Manual (v1.69)

Manual Edition 30168AE – DECEMBER 2011

©2000-2011, OPENEYE
All Rights Reserved.

No part of this documentation may be reproduced in any means, electronic or mechanical, for any purpose, except as expressed in the Software License Agreement. OpenEye shall not be liable for technical or editorial errors or omissions contained herein. The information in this document is subject to change without notice.

The information in this publication is provided “as is” without warranty of any kind. The entire risk arising out of the use of this information remains with recipient. In no event shall OPENEYE be liable for any direct, consequential, incidental, special, punitive, or other damages whatsoever (including without limitation, damages for loss of business profits, business interruption or loss of business information), even if OPENEYE has been advised of the possibility of such damages and whether in an action or contract or tort, including negligence.

This documentation is copyrighted. All other rights are reserved to OPENEYE. OPENEYE, and OpenEye, are registered trademarks of OPENEYE in the United States and elsewhere; Windows, and Windows XP Embedded are registered trademarks of Microsoft Corporation. All other brand and product names are trademarks or registered trademarks of the respective owners.

OPENEYE
Liberty Lake, WA • U.S.A.

MDVR OVERVIEW

The OpenEye iPhone MDVR software allows you to access your OpenEye recorder from almost anywhere on your iPhone, iPod Touch or iPad. View live video of your cameras using a simple interface. This document describes how to connect to an OpenEye recorder using the MDVR iPhone app and view live video.

Minimum Requirements

- OpenEye recorder
 - G3 H264 E-Series (v1.0.1.33+)
 - N-Series (v4.50.19+)
 - H-Series(v4.50.19+)
 - Xr-Series(v4.50.19+)
 - X-Series(v4.50.19+)
- Supported models:
 - Apple iPhone 3G, 3GS, 4, 4S
 - Apple iPod
 - Apple iPad
- Internet connection to the recorder

Application Features

- Live View
- Megapixel Camera support
- PTZ Control

Note Transmission latency may be visible when controlling PTZ on non-decoding IP cameras.

- Search (G3 H264 E-Series only / iPhone 4, 4S and 4th Generation iPod Touch only)

DVR CONFIGURATION

Commercial Recorder (E-Series)

Verify that the E-Series recorder is connected to the network. Press **Setup** on the front panel or IR remote control, and then go to **Network > Network Settings** and verify the network settings. If you are accessing the recorder from outside your network (using 3G or public wi-fi), verify that the correct ports are forwarded to the DVR (the default ports necessary for remote connections are 2000 and 2002).

Professional Recorder (N, H, X, Xr-Series)

Verify that the recorder is connected to the network. Enter **Setup** on the recorder, and then click Network Setup to verify the network settings. If you are accessing the recorder from outside your network (using 3G or public wi-fi), verify that the correct ports are forwarded to the DVR (the default ports necessary for remote connections are 2000 and 2002).

DOWNLOADING THE APP

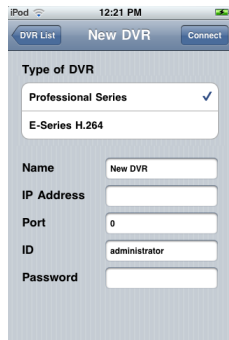
1. From your Apple iPhone or iTouch, tap the App Store icon.

Note To install an application from the App Store, you must have a valid Apple iTunes account.

2. Tap **Search** and type *OpenEye MDVR*.
3. Follow the instructions to download and install the application.
4. When the application is successfully installed, the **OpenEye** icon will appear on the device.

ADD A DVR SITE

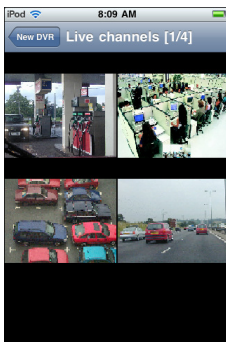
1. Launch the iPhone app.
2. Tap **Add**.
3. Tap **New DVR**.
4. Type a **Name** to identify the DVR.
5. Type the **IP Address, Port, ID** and **Password** of the DVR.
6. Select the appropriate **Type of DVR**.
7. Tap **Connect**.



VIEW LIVE VIDEO

When the DVR is connected, the iPhone screen will display the first four channels in quad view. To view the remaining channels, swipe the screen from right to left.

Tap a single channel to open full screen. To return to the multi-camera view, tap the screen to display the title bar and then tap **Back**.



View Camera Names

Camera names defined on the recorder can be seen in the iPhone application. To display camera names:

- Select a single camera and then tap the screen to display the title bar. The camera name will appear on the title bar.

CONTROL PTZ CAMERAS

PTZ control is available on cameras that are set up as PTZ on the connected DVR. On PTZ enabled cameras, you can zoom in and out and pan.

Note Some transmission latency will be visible when controlling PTZ on non-decoding IP cameras due to I-frames being sent in non-decoding mode.

- Zoom out – pinch your fingers together.
- Zoom in – pinch your fingers apart.

Tip The camera will zoom in or out farther the faster you move your fingers when zooming in and out.

- Pan left – drag your finger left.
- Pan right – drag your finger right.
- Pan up – drag your finger up.
- Pan down – drag your finger down.

Tip The camera will move faster the faster you move your fingers when panning.

BASIC SEARCH

Commercial Recorder (E-Series)

Basic Search is available on H.264 E-Series recorders. Search is limited to one channel at a time. To search:

1. In Live view, tap **Search**.
2. In Search view, select the **Date** box and use the Date Picker to set the desired date.
3. Select the **Time** and **Channel** boxes and select the desired time and channel.
4. Tap **Start**.
5. Use the Forward Play, Pause and Reverse Play controls to review video.
6. Tap **Back** to select a new date, time or channel.
7. Tap **Back** and then tap **Live Channels** to return to Live view.



AT&T 4:11 PM 19%

Live channels (1/4) Search Start

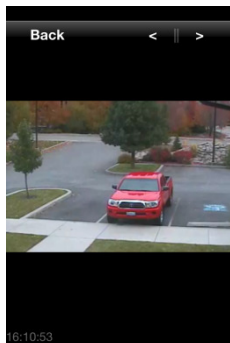
Date 2011-11-03

Time 16:11:00

Channel CM-305H



September	1	2009
October	2	2010
November	3	2011
December	4	2012
January	5	2013



www.openeye.net

1-888-542-1103

© 2011 OpenEye

All rights reserved. No part of this publication may be reproduced by any means without written permission from OpenEye. The information in this publication is believed to be accurate in all respects. However, OpenEye cannot assume responsibility for any consequences resulting from the use thereof. The information contained herein is subject to change without notice. Revisions or new editions to this publication may be issued to incorporate such changes.